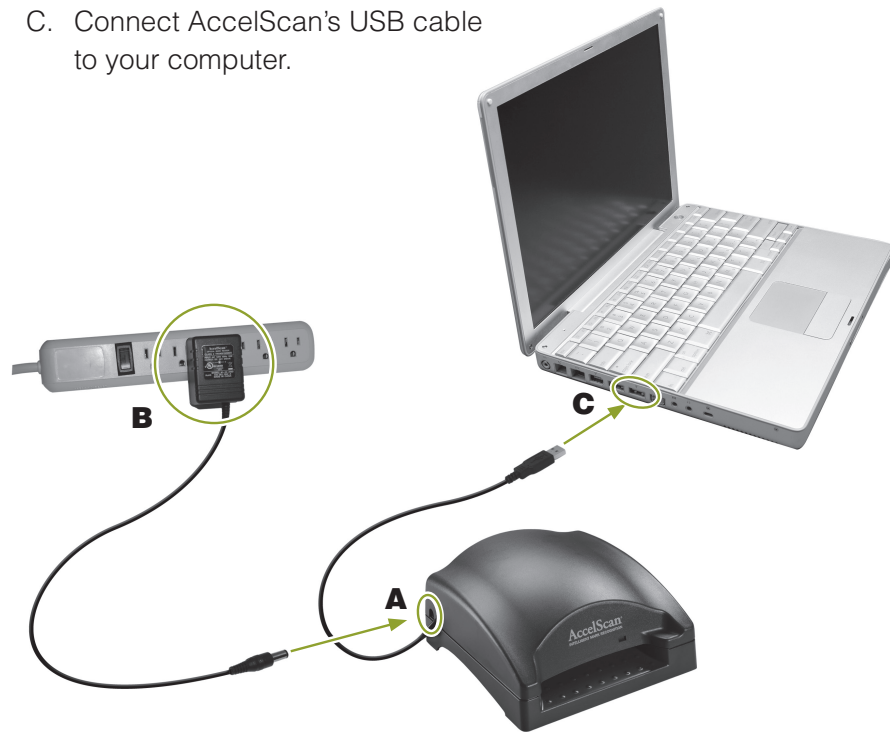


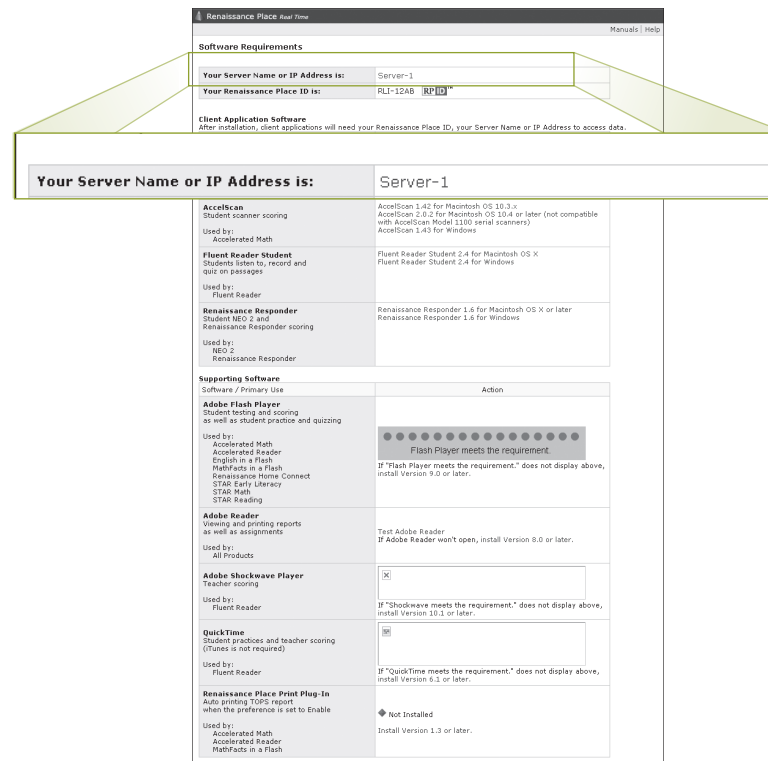
## 1 Plug In AccelScan and Connect It to Your Computer

- Connect the power cable to your AccelScan.
- Plug in the AccelScan.
- Connect AccelScan's USB cable to your computer.



## 2 Download the Software from Renaissance Place and Install the Software\*

- In your browser, go to the address for Renaissance Place.
- On the Welcome page, click **Check Software Requirements**.
- Note the server address! You will need this later.**



- Click the AccelScan link for your type of computer to download the file.
- To install the software, you need administrative rights on the computer so that you can install software for all users. Log in to the computer as an administrator. (If you have questions, see the Technology/Computer coordinator for your school.)**
- Double-click the file you downloaded. (If you chose to run the file when you downloaded it, skip this step.)
- Follow the instructions in the installer.

\* If you are using AccelScan with AccelTest or a desktop Renaissance Learning product, you won't use this software. See your product's software manual for instructions.

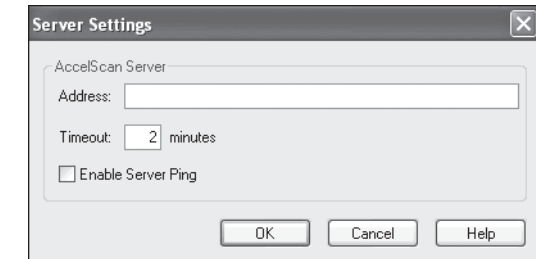
## 3 Start Using the AccelScan Software\*

- After installing, start AccelScan:

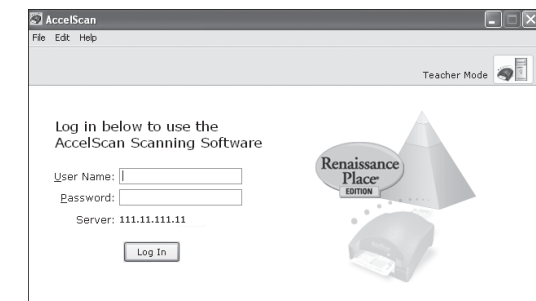
**Windows:** Click **Start > Programs > AccelScan Scanning Software > AccelScan**.

**Macintosh:** Open the **Applications** folder, then the **AccelScan** folder. Double-click **AccelScan**.

- Fill in the address from step 2C. Click **OK**.



- Enter your Renaissance Place user name and password and click **Log In**.



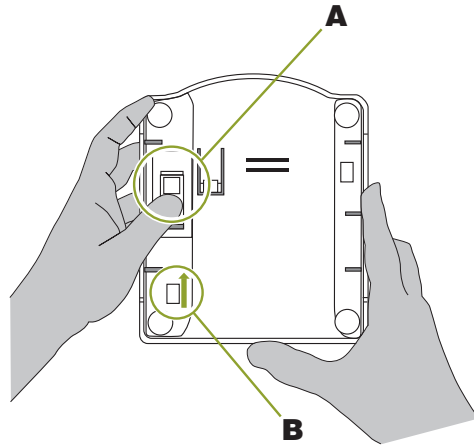
- The AccelScan light turns green, and the software tells you it's ready to scan. For scanning instructions, see the *Accelerated Math Software Manual* or click **Help** in Accelerated Math.

If there's a problem, click **Scanner Settings**, then select the port where the scanner is connected. If the scanner has an on/off switch, make sure it is on. Once the program detects the scanner, the exclamation point over the scanner icon disappears and you can choose a sensitivity setting for the scanner. Click **OK**.

\* If you are using AccelScan with AccelTest or a desktop Renaissance Learning product, you won't use this software. See your product's software manual for instructions.

## Cleaning AccelScan

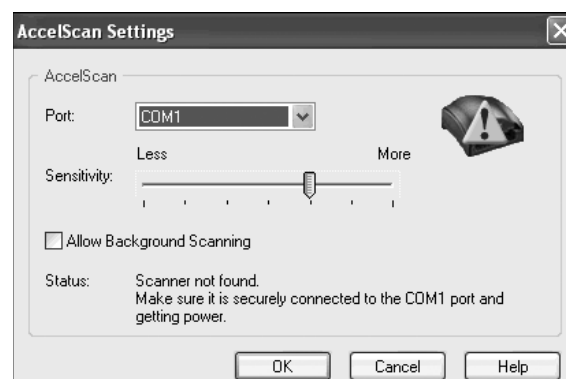
- A. Unplug the AccelScan from the electrical outlet.
- B. Hold down **A** with your left thumb.
- C. Slide the base up (in the direction of arrow **B**) with your right thumb until the tabs no longer hold the base in place. Remove the base.
- D. Clean the lens area with compressed air electronic equipment duster. (Follow the manufacturer's instructions.)
- E. To reattach the base, fit the slots over the tabs and slide the base down to lock it into place.



## Setting Scanner Sensitivity

If you need AccelScan to be more or less sensitive to marks on a card, follow these steps:

- A. **Windows:** Click the **Edit** menu and choose **AccelScan Settings**.  
**Macintosh:** Click the **AccelScan** menu and choose **Preferences**.
- B. Move the Sensitivity arrow to the right to make the scanner more sensitive or to the left to make it less sensitive. Click **OK**.



## Problems?

If your AccelScan fails to perform as designed, please contact Technical Support:

### USA:

Email: [support@renlearn.com](mailto:support@renlearn.com)  
Toll-Free Number: (800) 338-4204

### UK and Europe:

Email: [support@renlearn.co.uk](mailto:support@renlearn.co.uk)  
Telephone: +44(0)845 260 3570

If we cannot solve the problem over the phone and your AccelScan is under warranty, we may ship a replacement and give you instructions for returning the original scanner. If you return the original scanner, please do not write on it. If you need to include notes, write them on a separate sheet of paper and return it with the scanner. If you do not return your faulty AccelScan within 15 days, you will be billed the full price for the replacement AccelScan.

## Warranty

Renaissance Learning, Inc. (RLI) warrants each AccelScan intelligent mark recognition scanner sold by RLI to be free from defect in material and workmanship under normal use and service beginning with the date of delivery to the purchaser. This warranty is subject to the following conditions: The warranty period is classified as one (1) year and is limited to the replacement or repair during the warranty period and subject to conditions enumerated below, of such product returned intact which shall appear to RLI, upon inspection, to have been defective in material or workmanship. Replacement or repair will be accomplished at one of the Renaissance Distribution Centers. Such replacement shall be made free of charge if a defect becomes apparent and RLI is notified within the warranty period.

This warranty does not include any taxes which may be due in connection with replacement or repair, nor any installation, transportation, or postage costs to return the unit to RLI. This warranty does not cover repair or replacement because of damage from unreasonable use (damage from road hazards, accident, fire or other casualty, misuse, negligence, incorrect wiring, lightning, etc.) and any use or installation not in conformance with instructions furnished by RLI or repairs or replacement needed because of modifications not authorized or supplied by RLI. This warranty is expressly in lieu of any other warranties, express or implied, including any warranty of merchantability or fitness for particular purpose. Remedies under this warranty are expressly limited to the provision of products as specified above and any claims for loss arising out of the failure of products to perform for any period of time, or special, indirect, or consequential damages or other economic loss are expressly excluded.

## Notices

Covered under one or more of the following patents: USP 7068861, USP D476656, and USP 6736319. Additional patents pending.

This product is intended to be supplied by a UL Listed Direct Plug-In Power Unit marked "Class 2" and rated 24 V DC, 250 mA.

Tested to Comply with FCC Standards FOR HOME OR OFFICE USE

This device complies with Part 15 of the FCC rules. Operation of this device is subject to the following two conditions: (1) this device may not cause harmful interference, and (2) this device must accept any interference received, including interference that may cause undesired operation.

This Class B device complies with Canadian ICES-003.  
Cet appareil numérique de la classe B respecte toutes les exigences du Règlement sur le matériel brouilleur du Canada.



© 2011, Renaissance Learning, Inc.  
AccelScan, Accelerated Math, Renaissance, Renaissance Learning, and Renaissance Place are trademarks of Renaissance Learning, Inc., and its subsidiaries, registered, common law, or pending registration in the United States and in other countries.